

inco

Leaders in Leisure



Outdoor & Indoor
Leisure Sports Equipment

Service With Integrity

ABOUT US

Inco Mechel, established in 1984, is one of India's leading companies in capital equipment for the sports and leisure industry. A part of the esteemed 65+ year-old Allstate Group (www.allstate.in) based in Mumbai, Inco Mechel has built its reputation by offering innovative solutions and exclusive marketing rights for some of the world's most renowned family entertainment industry brands.

We've supplied to and given consultation to nearly every single major Family Entertainment Center in India, and have supplied to Corporate and Educational Campuses, government institutions as well as the defence sector.

Some of our notable offerings:

- Ten-Pin Bowling Equipment & Installation
- Paintballing Equipment & Accessories
- Self-Balancing Vehicles & Go-Karts
- Boats like Rigid Inflatables and Personal Water Crafts
- Pool & Billiards Tables
- Arcade & Virtual Games
- Softplay & Trampoline Parks
- Indoor Skydiving Arenas
- Ice Skating Rinks & Snow-Making Equipment
- Golf & Multi-Sports Simulators

Inco Mechel is also the proud manufacturer of IncoDock HDPE Floating Docks & Jetties, widely used in prestigious projects across India. We are the founders of Locomo Electric Self-Balancing Vehicles and one of India's leading importers of paintball equipment. To further enhance the gaming experience, Inco Mechel introduced 3D Augmented Reality (AR) features for Bowling Alleys, Pool Tables, and Dart Games in India.

Our commitment to innovation is evident in our collaborations with global leaders such as Switch (Turkey) for bowling installations, Tippmann (USA) for paintball markers, Berg (Netherlands) for Go-Karts, Seadoo for Jet Skis, Falcon Water Tag Extreme for Water Guns, Industrial Frigo for Ice Skating Rinks, and Aerodium Technology for Skydiving Arena Zero Gravity concepts in India.

Our vision is to support Family Recreation Centres (FRCs) that offer safe and healthy fun for all ages, making us a one stop provider of leisure equipment. Our ultimate goal is to be recognized as the Leaders in Leisure. Whether you are planning a new project or seeking maintenance services for an existing facility, our team is dedicated to delivering an exceptional experience from start to finish.



ENTERTAINING INDIA

WHY CHOOSE INCO MECHEL PVT. LTD.

At INCO Mechel Pvt. Ltd., we provide more than just leisure equipment—we offer a complete, professional service from start to finish. Here's why we are your ideal partner for sports, family entertainment and leisure related products and solutions:

1. Experience & Credibility

With years of industry experience, we specialize in custom solutions tailored to your budget and goals. We manage turnkey projects, covering everything from equipment sourcing to installation and after-sales support.

2. Professionalism & Standards

Our in-house engineering team ensures precise installation and ongoing support. As authorized dealers for top brands, we guarantee high-quality equipment for your setup.

3. Industry Engagement

We actively participate in key exhibitions and adhere to industry certifications, ensuring we stay ahead of trends and comply with all standards.

4. Client Relations & Support

We have a proven track record with diverse clientele and offer 24/7 support, including staff training programs to ensure smooth operations.

5. Quality & Reliability

Our high-quality equipment is backed by reliable after-sales service, and we keep spare parts available to minimize downtime. Energy-efficient solutions help reduce operational costs.

6. Environmental Considerations

We use eco-friendly installation practices and energy-efficient equipment to support sustainability.

INCO Mechel Pvt. Ltd. is committed to delivering a world-class experience for your project. Let us help bring your vision to life with a seamless setup process and lasting support.



BOWLING ALLEY



At Inco Mechel, we take immense pride in having introduced the sport of Ten-Pin Bowling to India, establishing the country's first-ever bowling alley in Indore, Madhya Pradesh, back in 1995. Since then we have set up over 60+ projects across the country. With decades of experience in the bowling industry, we specialize in end-to-end consultancy and project management for setting up bowling alleys. Having partnered with leading brands in the bowling equipment sector, we leverage our expertise to offer comprehensive services, ensuring that every aspect of your bowling alley setup— from equipment procurement and installation to after-sales services — is expertly managed

BOWLING ACCESSORIES



Shield String Pinsetter



Hood & Rack



Pininfarina Seating



Bowler's Console Genie

TYPES OF BOWLING LANES

When planning your bowling alley, choosing the right bowling system is crucial. We offer a variety of options to suit different needs:



SWITCH STI With Genie Scoring - Automatic Bowling Systems



Switch String Semi-Automatic Bowling Systems



Duckpin Bowling Mini Bowling Systems (Ideal for Spaces With Limited Area)



INCO PROJECT HIGHLIGHT

BOWLING CENTER CHAIN'S



Timezone, Noida



Glued Entertainment,
Ludhiana



SkyJumper,
Faridabad



The Grid, Bangalore



HopUp, Mumbai &
Chandigarh

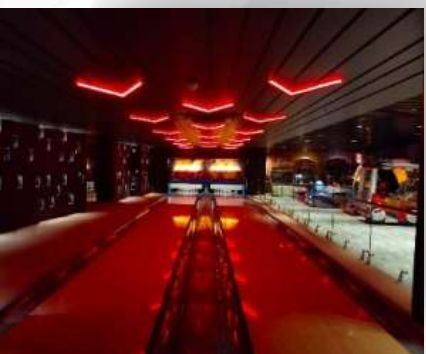


Funblast, Gujarat

CLUBHOUSE



Emaar Palm Garden
& Terrace, Gurgaon



Paradise Group Sai
World, Navi Mumbai



Emerald Club, Arihant,
Rajkot

GAMING CENTER



Oriss Infrastructure,
Gurgaon



Wee Play, Hyderabad



Woop, Surat



Funbond , Aurangabad



Grand Machal, Indore



Coco Jambo, Africa
(International)

UPGRADED CENTER WITH VECTOR SCORING



Lulu, Kerela



Celebration, Jaipur



Liberty Oil Mill, Alibag

INTERACTIVE BOWLING, AR POOL TABLES, ARCHERY, AND DART PROJECTION GAMES

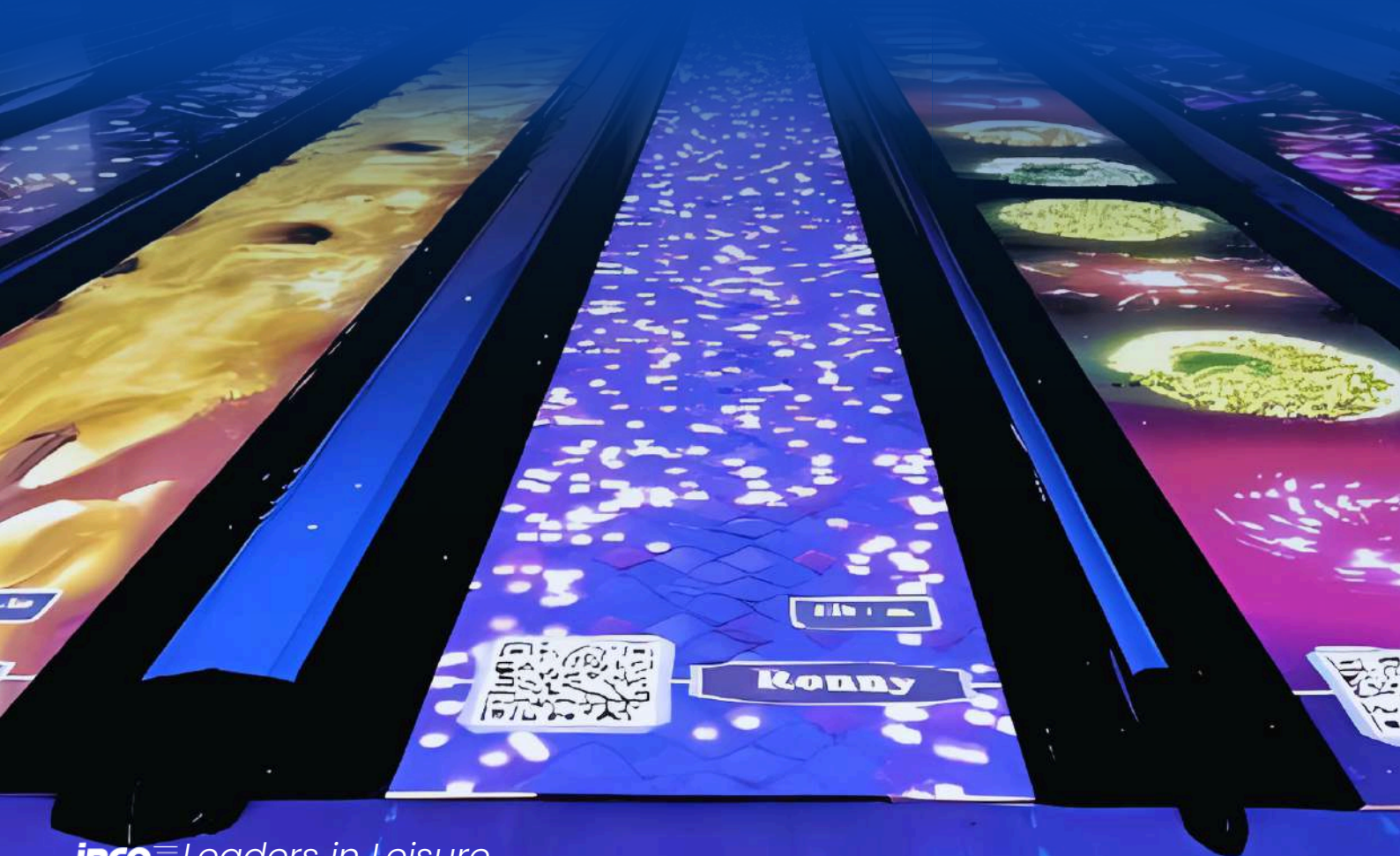
Inco Mechel Pvt. Ltd in exclusive partnership with **IQHDA Interactive**, proudly delivers revolutionary entertainment solutions that blend cutting-edge Augmented Reality (AR) technology with unparalleled innovation. Our Interactive Bowling, immersive Archery Projection games, AR Pool Tables, AR Dartprojection systems, Pin Deck Projection Wall, and Logo Projection are designed to elevate your venue and leave a lasting impression on your guests.

What Sets Us Apart:

Engage a global audience, enjoy premium quality on a budget and enhance our system with precise motion tracking and continuous innovation.

Get Ready for the Future

Our vision doesn't end here. We redefine expectations and imagination, introducing advanced systems that go beyond the ordinary. We are committed to continuously upgrading our products with innovative features and delivering regular updates to keep your systems ahead of the curve. Our team is dedicated to creating something unique and groundbreaking, ensuring your venue stands out with unmatched entertainment solutions.





Bowling 360 Wall Projection



AR Pool Table



Augmented Reality Bowling

AMUSEMENT GAMES

We deal in outdoor equipment and assist in setting up adventure activities, which include paintball setups, go-karts (engine & electric), adventure vehicles (ATVs, electric go-karts, LOCOMO), zorbs, bouncy rides, trampolines, bull rides, water tubes, playground equipment, dinosaur rides, rock climbing, zip lines, and more.



Pool Table & Snooker Table



Air & Speed
Hockey



Gun Shooting



Bike Racing



Basketball



Claw Machine



Hit a Mouse



Bike Racing



Hammer

GOLF & MULTI-SPORTS SIMULATOR

Experience the ultimate indoor leisure with our Golf & Multi-Sport Simulators. Perfect for players of all levels, the Golf Simulator combines advanced sensor technology and swing analysis for a realistic and immersive golfing experience, whether you're practicing your swing, putting, or playing a full 18-hole round. The compact design fits into spaces as small as 100 sqft, making it ideal for any setting.

For a broader sports experience, the Surround Multi-Sport Simulator offers camera tracking technology to let you play a variety of sports— from baseball to basketball— indoors. Whether for fun or training, it's a great tool for beginners and pros alike.

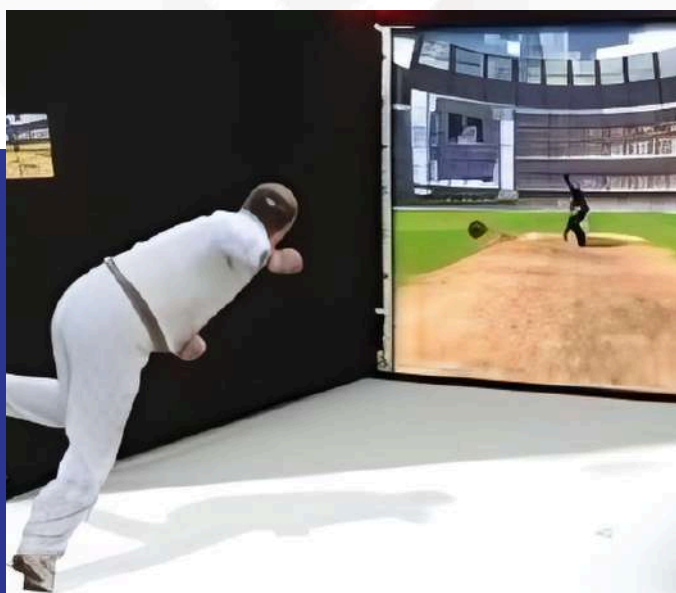
Perfect for corporate events, parties, or rentals, we offer customizable packages to fit your space and needs, with a recommended area of 350 sqft for the full experience.



Golf Simulator



Football Simulator



Cricket Simulator



Surfing Simulator

SNOW & ICE SKATING

We've carefully selected Industrial Frigo Ice as the ideal partner for manufacturing indoor and outdoor ice rinks, both moveable and fixed. For over 20 years, Industrial Frigo Ice's Italian quality and finishing has ensured success worldwide, with a significant work done in the USA. With a presence in more than 40 countries, Industrial Frigo Ice is able to provide the most efficient solutions at any latitude. They're able to install ice rinks in temperatures well above 0° C, in closed environment places like shopping malls.



INDOOR SKYDIVING AREA (ZERO GRAVITY ARENA)

Experience the thrill of free-fall skydiving at ground level with near perfect fidelity with Aerodium's Vertical Windtunnels. The PRO wind tunnel model is a preferred choice for many investors due to its superior ability to recreate the free-fall experience. This model accommodates all users, from novice flyers to professional skydivers, providing an exceptional indoor skydiving experience. Aerodium PRO tunnels are highly regarded by skydivers for their high wind speeds and large diameters, which enable the execution of complex routines.

The R4 and R5 PRO series wind tunnel models are capable of hosting FAI World Cup level competitions. Notably, the 2018 World Cup was held in Aerodium's R4 tunnel named Gravity in Bahrain, which is testament to Aerodium's prestige in this market.





INDOOR AMUSEMENT

We are the pioneers of Ten-Pin Bowling in India and were the first to introduce Family Entertainment Centers (FECs) to the country. We specialize in providing capital equipment and end-to-end consultancy services for sports, leisure, and recreational activities, making us the ultimate partner for your entertainment ventures. We deal in setting up bowling alleys—new and refurbished bowling lanes, interactive applications, bowling accessories and spare parts, as well as indoor games such as table games (pool, foosball, table tennis, air hockey),

VR & arcade games, multi sport simulator games, laser tag systems, fulldome, indoor sky diving, striking car, Interactive games, and soft play & trampoline parks.

OUTDOOR ADVENTURE AMUSEMENT

We deal in outdoor equipment and assist in setting up adventure activities, which include paintball setups, go-karts (engine & electric), adventure vehicles (ATVs, electric go-karts, LOCOMO), zorbs, bouncy rides, trampolines, bull rides, water tubes, playground equipment, dinosaur rides, rock climbing, zip lines, and more.



LOCOMO

The Locomo Electric Transport Vehicle, also known as the SBV (Self-Balancing Vehicle), is a state-of-the-art personal transport solution that utilizes advanced technology to offer a revolutionary transportation experience. Riders can effortlessly control direction, rotation, forward and backward motion, and speed through intuitive weight distribution and handlebar manipulation. This easy-to-use design makes the Locomo SBV perfect for large spaces such as corporate campuses, parks, transportation terminals, malls, and more. Lightweight, highly maneuverable, and electric-powered, the Locomo SBV reaches a top speed of 15 km/h, ensuring smooth and efficient mobility. Its quiet operation ensures it remains safe for pedestrians and hazard-free for nearby walkers.

The Locomo SBV is widely applicable in a variety of settings, including :

- Individual transportation
- Security patrolling
- Tours of historical sites and scenic routes
- Corporate logistics
- Amusement and adventure park attractions
- Shopping malls and market areas
- Residential complexes and villas
- Clubhouses
- University campus mobility
- Intra-facility transportation (warehouses, godowns, factories, shipyards)

With its versatility and innovative design, the Locomo SBV provides an efficient and eco-friendly transport solution across diverse environments.

Technical Specs:

- Battery Type : 48V Lead Acid Battery
- Driving Speed : 15 kms/hr Max
- Climbing Angle : < 30 degree
- Time : 6-10 hrs Max (Not sure)
- Wheels : 2*19" Kenda Off-road Tubeless Type Max
- Range : 30-35 kms Full Charge (6-10 Hrs Max)
- Load Weight : 130 kgs
- Weight : 53 kgs





PAINTBALL

Paintballing is a niche, fun activity that involves teamwork, skill, and coordination. Inco has played a key role in popularizing the sport in India, and given that even 10-20 people can play at a time, many people now actively seek out paintballing venues.

Paintball courses are highly customizable, allowing you to control the difficulty and intensity of play by adjusting the terrain, objective placement, and obstacles.

We have partnered with the world's leading paintball equipment manufacturers and supply products all over India. We offer every type of equipment and support material related to paintballing.



WATER SPORTS

We have an array of boats – new and used – available for sale. Based on your requirement, we'll find you the correct category and type of boat, from a trusted manufacturer, at the right price. Some types of boats we offer are:



Speed Boat/ Cabin Boat



Parasailing Boat



Kayak & Canoes



RIB's & HDPE Boat



Jetski



Bumber Boat



Water Cycle



Banana & Towable Boats



FALCON WATER TAG EXTREME

Falcon Water Tag Extreme is a veteran in the attractions business with its owners holding a combined experience in the field of over 40 years in the industry both operating and producing attractions. We take pride in being industry innovators and providing supreme service both within the service end as well as manufacturing. With Falcon providing service to over 100000 players a year in water tag alone we have the experience and knowhow to guide our clients to succeed in this new business. In addition to inventing and providing water tag, Falcon also provides a wide range of solutions for attractions "in, on and next to the water" for water parks, resorts, summer camps and a wide range of operators/rental companies



Education
Activity



Active
Lifestyle



Non
Violence



Non
Toxic



Fast
Shipping

INCODOCK HDPE FLOATING DOCK



Incodock, a brand by Inco Mechel Private Limited, is an installer of Modular Floating Jetties & Docking Systems usable on all types of water bodies. We manage turnkey floating construction projects by providing consultation & expert advice along with installation & maintenance of floating jetties, docks, etc. Our Floating Platforms are easy to setup and operate, and are eco-friendly and non-toxic in nature. Due to their properties and modular nature, our floating systems have been used in a number of innovative ways. Incodock floating cubes are made up of the finest Virgin HDPE granules that strictly meet JAS-ANZ ISO 9001-2008 standards. They have considerable resistances to natural calamities and can withstand temperatures up to 110°Celsius. These cubes are also recyclable, offering residual value even after their purpose is served.

Applications:



Walkway & Pumping Station



Floating Solar



Floating Jetty With Canopy



Floating Material Transport Solution (MTS)



Floating Fountain



Floating Aquaculture

IncoDock Floating Cubes Features

- Excellent impact resistance
- High tensile strength
- Can continuously withstand temperatures of up to 110°C
- Chemical and corrosion resistant. Not affected by seawater
- Does not absorb moisture
- Non-toxic & eco-friendly
- Very lightweight
- Easy installation, assembly & disassembly
- Each IncoDock cube can take buoyant weight of approximately 90 kgs
- Best anti-skid surface design
- IncoDock Floating platform can easily be towed across water

Focus on Specialty, Safety, Durability

Single Float Size: 500*500*400mm



A GLIMPSE OF FLOATING DOCK SETUPS COMPLETED BY US



APTDC Andhra Pradesh



IWAI Tripura



JNPT Port, Mumbai



Piramal Varanasi



Kerela Project



Andaman and Nicobar Island

CLIENTELE



THE GAME PALACIO



A HEARTFELT THANK YOU FOR JOINING US AT IAAPI EXPO

We sincerely thank our clients, friends, and well-wishers for consistently visiting our booth at the IAAPI Expo over the years. Your presence has had a lasting impact, and we're grateful for the opportunity to share this journey with you. To celebrate, we've curated a selection of photos from the Expo over the years, highlighting the memorable moments we've shared throughout our IAAPI journey.





+91-7208108800 / +91-7208008801

contact@inco.in

www.inco.in

910, Maker Chambers V, Nariman Point,
Mumbai 400 021, Maharashtra, India.

ALLSTATE
GROUP



OUR ALLIANCE



inco Leaders in Leisure